

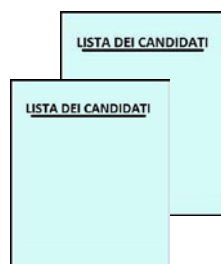
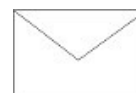
September 25, 2022 - POLITICAL ELECTIONS
VOTING ABROAD BY POSTAL CORRESPONDENCE

How do you vote
(Instructions to return ballot papers)

The packet includes:

- 1 electoral card, with a detachable slip;
- 2 lists of candidates (Chamber of Deputies and Senate of the Republic);
- 2 ballot papers (Chamber and Senate);
- 1 small envelope (usually white)
- 1 larger envelope, postage-paid, bearing the address of the competent diplomatic/consular office;
- this information sheet.

Electoral package

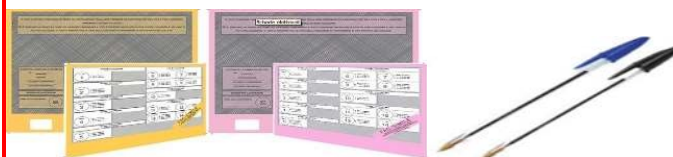


To vote you must **ONLY** use a black or blue ballpoint pen.

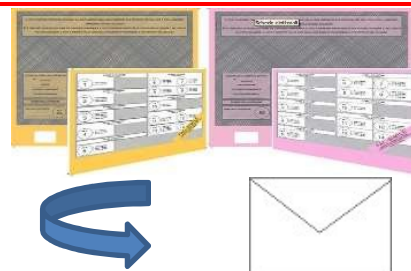
To cast your vote, you must put a **mark** (e.g. an "X" or a check mark) on the symbol corresponding to the list of your choice, or on **the rectangle of the ballot paper surrounding it**.

You may cast a vote of preference by writing the candidate's last name on the line next to the checked symbol.

Your vote is personal, free and secret.

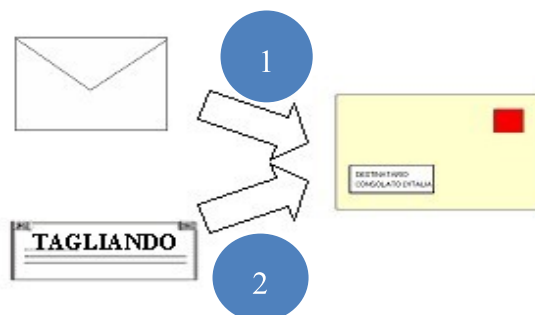


Once you have voted, place the ballot papers in the small all-white envelope and seal the latter.



1 Place the **small envelope in the postage-paid larger envelope** (bearing the address of the competent diplomatic/consular office);

2 Place the **electoral slip** in the postage-paid envelope.



Please note: DO NOT put the electoral slip in the small, all white envelope that must contain only the ballot papers

Seal the postage-paid envelope and mail it to the Consular Office ensuring that it arrives there **no later than 4:00 p.m. (local time) THURSDAY, SEPTEMBER 22, 2022;**

DO NOT ADD SENDER'S NAME

